



Zaha Hadid Architects

London, United Kingdom

Presentation By: Kayla Griffin

Zaha Hadid was able to transform how contemporary architecture is viewed today. She founded *Zaha Hadid Architects* in 1979 with the intention to create spaces that influenced social change. In taking inspiration from the Constructionism Era, she conveyed a futuristic and modern style that prompted public areas to be multidisciplinary and collaborative.

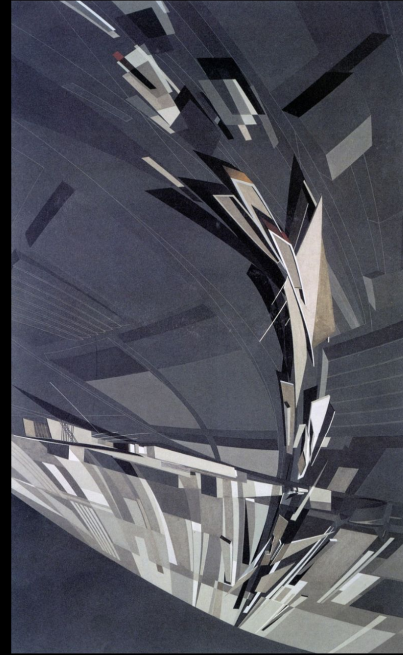
Her method of work originated from her background in mathematics. She obtained her undergraduate degree from American University of Beirut located in her home country of India. Then in 1972 she moved to London where she received a degree from the Architectural Association School. Her structures explored the limits of curvature and geometric shapes, serving as potential for a brighter future. Despite her death on March 31st 2016, Zaha Hadid's practice still persists across the globe.

THE VITRA FIRE STATION

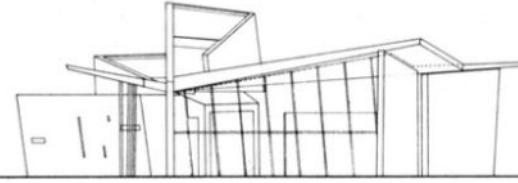
Rhein, Germany

1993

The Vitra Fire Station was one of Zaha Hadid's first major contemporary architecture projects. It was originally a fire house, but was transformed into a gallery. The use of geometric shapes give the illusion of the building to appear larger. The slanted roofs as on to the contemporary and futuristic effect.



alzado lateral Oeste / West side elevation



alzado lateral Este / East side elevation

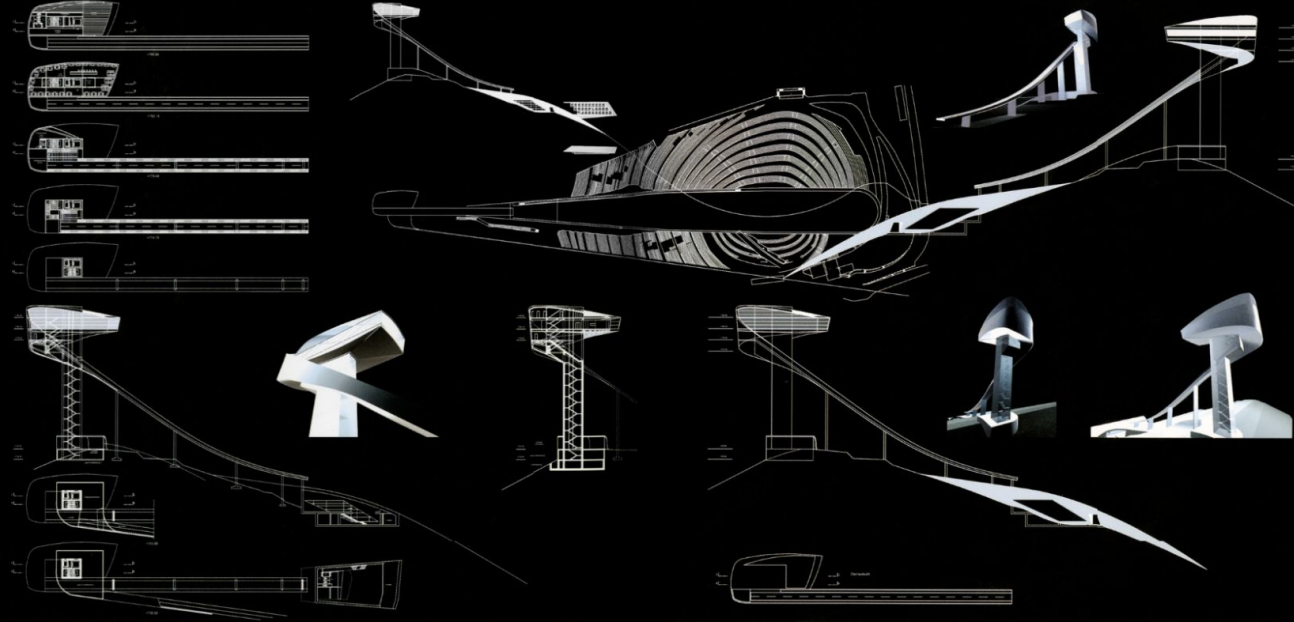
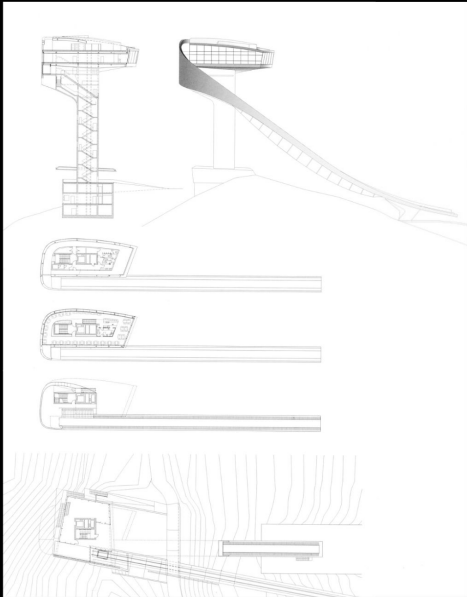


BERGISEL SKI JUMP

Innsbruck, Austria

2002

The elevated design of the Bergisel Ski Jump gives the structure a futuristic look. In rounding the corners, Zaha Hadid is able to make the ski jump more flush to make the metal structure cohesive to the landscape. Curvature allows a natural aesthetic to a building to complement the other surrounding areas.



ORDRUPGAARD

Copenhagen, Denmark
2005

The Ordrupgaard was originally created in 1918 by architects Wilhelm and Henry Hansen. Zaha Hadid designed an extension to the historical estate. The concrete structure is styled to blend in with the landscape. Through the neutral tones, the greenery around the building can be highlighted.

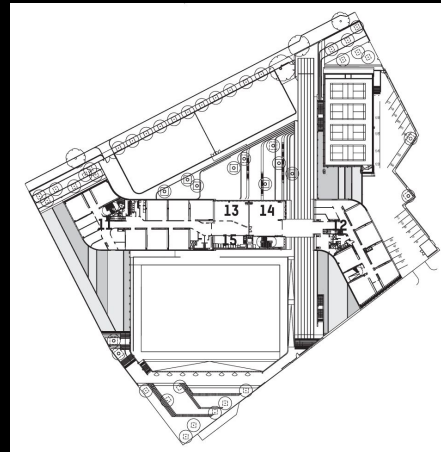


EVELYN GRACE ACADEMY Brixton

London, United Kingdom

2010

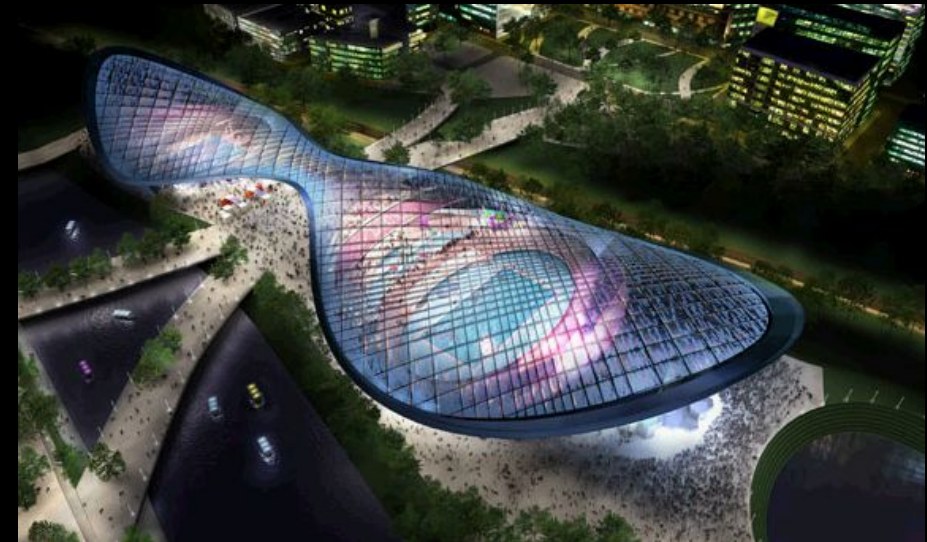
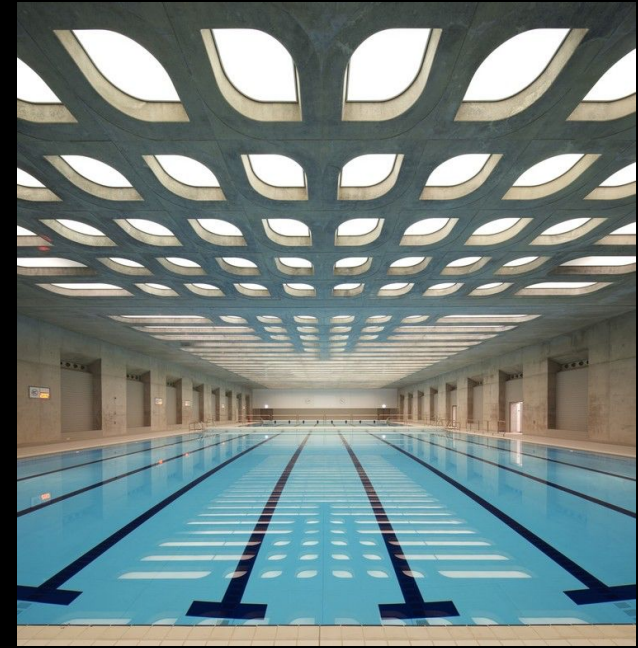
This building has a immersive design that incorporates multiple different facilities. The school structure forces there to be many accommodations for a vast and diverse student body. Zaha Hadid did a great job in making this building multifunctional without needing to separate areas. The structure is compact and is a hub for collaboration.



LONDON AQUATIC CENTER

London, United Kingdom
2011

This center has a smooth design. In having this building be an aquatic center, Zaha Hadid took influence by the geometric shapes of water. As it can be seen, the structure has a complementary pattern in curvature to give the effect of movement. In demonstrating symmetry in minor details like the ceiling, there is a calming atmosphere as it is not harsh. The neutral color palette is also appealing to the eye.



GALAXY SOHO

Beijing, China
2012



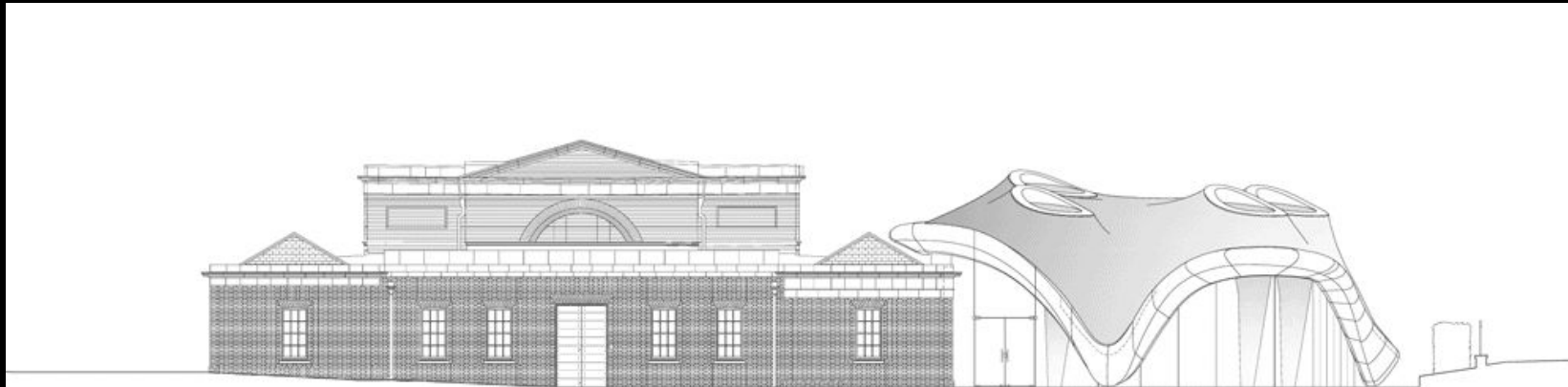
The hive-like design of the Galaxy Soho building allows a person to be encapsulated.. In having the structure be enclosed by an array of different restaurants, stores, and lounge areas, there is a whole experience of being in a different place from the outside. The curves of the Galaxy Soho also leave the person to not see defined ends to the building. It leaves the effect of the flow of the structure to be infinite.



SERPENTINE SACKLER GALLERY

London, United Kingdom
2013

This Serpentine Sackler Gallery has a balance between old and new architecture. It is seen how curvatures adds a seamless feel to the design of the building. While there are differences shown from the different architectural styles, the color contrast induces a natural collaboration among the spaces.



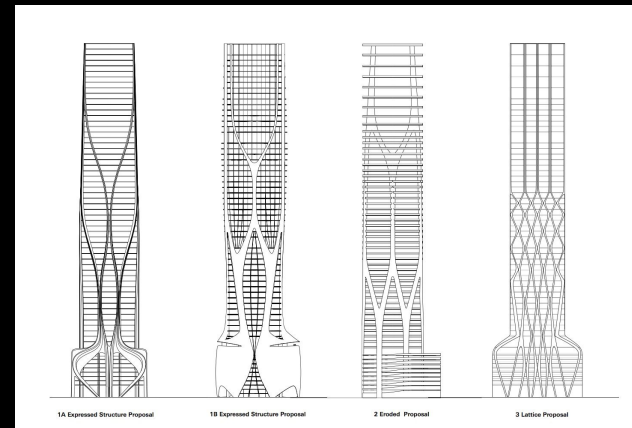
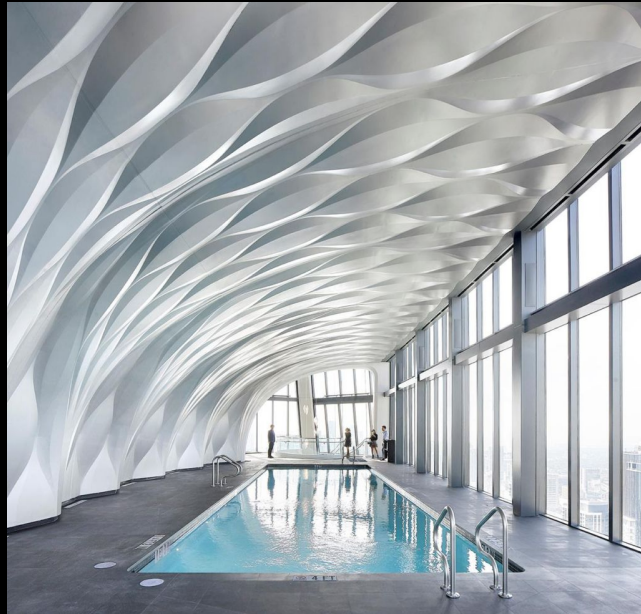


ONE THOUSAND MUSEUM

Miami, Florida, United States

2019

The One Thousand Museum was one of Zaha Hadid's last projects before she passed in 2016. There is a futuristic design in the curvature in the building. There are many details involved to add to the complexity of the structure. The bottom of the building ascends upward as if the building has grown off of the ground. The different sections allow the eye to move seamlessly throughout the building.



Sources of Information

Zaha Hadid Architects

<https://www.zaha-hadid.com/people/zaha-hadid/>

Vitra Fire Station

https://library.artstor.org/asset/AWSS35953_35953_29395307

https://library.artstor.org/asset/AWSS35953_35953_29397309

https://library.artstor.org/asset/AWSS35953_35953_29397345

Bergisel Ski Jump

https://library.artstor.org/asset/AWSS35953_35953_29397132

https://library.artstor.org/asset/AWSS35953_35953_29397127

<https://www.tyrol.tl/en/highlights/sights/bergisel-ski-jump/>

Ordrupgaard

https://library.artstor.org/asset/ARTONFILE_DB_10312579615

https://library.artstor.org/asset/ARTONFILE_DB_10312580057

https://library.artstor.org/asset/ARTONFILE_DB_10312580103

<https://ordrupgaard.dk/en/udstillinger/the-architecture/>

Evelyn Grace Academy

<https://www.miesarch.com/work/1074>

<https://www.flickr.com/photos/dariusz69/6570634829>

<https://www.architectural-review.com/today/evelyn-grace-academy-by-zaha-hadid-in-london>

<https://www.edmundsumner.co.uk/health-education/evelyn-grace-academy>

London Aquatic Center

<https://www.zaha-hadid.com/architecture/london-aquatics-centre/>

<https://archello.com/project/london-aquatics-centre-2>

<https://www.archdaily.com/161116/london-aquatics-centre-for-2012-summer-olympics-zaha-hadid-architects>

Gallery Soho Beijing

<https://www.chikara-inamura.com/GALAXY-SOHO>

<https://www.zaha-hadid.com/architecture/galaxy-soho/>

https://h Zhang.photoshelter.com/image/I0000f_gxrOBCT8

<https://www.zaha-hadid.com/architecture/galaxy-soho/>

Serpentine Sackler Gallery London

https://www.domusweb.it/en/architecture/2013/10/17/zaha_hadid_serpentines_sackler.html

<https://www.dezeen.com/2013/11/01/the-magazine-restaurant-at-the-serpentine-sackler-gallery-extension-by-zaha-hadid/>

<https://www.erco.com/en/projects/culture/serpentine-sackler-gallery-london-5904/>

<https://www.dezeen.com/2013/09/27/serpentine-sackler-gallery-by-zaha-hadid-photographs-by-luke-hayes/>

One Thousand Museum

<https://www.buzzbuzzhome.com/miami-fl/one-thousand-museum>

<https://www.liveauctioneers.com/news/top-news/art-design/zaha-hadids-one-thousand-museum-tower-is-an-artwork-in-itself/>

<https://archinect.com/news/article/150206068/zaha-hadid-s-one-thousand-museum-miami-tower-officially-completed>

<https://www.archdaily.com/883043/structural-design-of-zaha-hadids-1000-museum-revealed-in-cad-drawings/5a01e62db22e38b1dc0005b6-structural-design-of-zaha-hadids-1000-museum-revealed-in-cad-drawings-photo>